

**SHEET KEY PLAN :**

**NOTES :**

- THIS DRAWING SHOULD BE READ IN CONJUNCTION WITH DRAWING Nos. 70012806-03-TMO-01-01 TO 70012806-03-TMO-01-05 & 70012806-03-TMO-02-02 TO 70012806-03-TMO-02-06
- REFER TO TABLE ON DRAWING No. 70012806-03-TMO-02-06 FOR TOTAL PROVISION OF WAITING / LOADING FEATURES

**KEY**

WAITING / LOADING FEATURE TYPE AND RESTRICTION

<b>P1</b>	PAY TO PARK BAY TYPE 1 : MON - SAT, 8.30am - 6.30pm, MAX STAY 4 HOURS, NO RETURN WITHIN 1 HOUR
<b>P2</b>	PAY TO PARK BAY TYPE 2 : MON - SAT 8.30am - 6.30pm, MAX STAY 20 MINS, NO RETURN WITHIN 1 HOUR 6.30pm - 8.30am NO STOPPING EXCEPT TAXIS
<b>P3</b>	PAY TO PARK BAY TYPE 3 : MON - SAT, MIDDAY - 6.30pm, MAX STAY 4 HOURS, NO RETURN WITHIN 1 HR NO WAITING: MON-SAT, MIDNIGHT - MIDDAY DISABLED PARKING BAY AT ANY TIME, MAX STAY 4 HOURS ON MON - FRI, 8.30am - 6.30pm, NO RETURN WITHIN 1 HOUR
<b>D</b>	RESIDENTS PARKING BAY (WESTMINSTER E) AT ANY TIME
<b>R</b>	TAXI BAY AT ANY TIME NO STOPPING EXCEPT TAXIS
<b>T</b>	TAXI BAY AT ANY TIME NO STOPPING EXCEPT TAXIS
<b>DR</b>	DOCTORS PARKING BAY 8.00am - 8.00pm
<b>L1</b>	LOADING BAY TYPE 1 AT ANY TIME, MAX STAY 20 MINS, NO RETURN WITHIN 1 HOUR
<b>L2</b>	LOADING BAY TYPE 2 GOODS VEHICLES LOADING ONLY MON - SAT, 7.00am - 6.30pm MAX STAY 1 HOUR NO RETURN WITHIN 1 HR
<b>L3</b>	LOADING BAY TYPE 3 MON - SAT, 8.30am - 6.30pm MAX STAY 1 HOUR, NO RETURN WITHIN 1 HOUR
	SINGLE YELLOW LINE NO WAITING: MON - SAT, 8.30am - 6.30pm
	SINGLE YELLOW LINE + SINGLE YELLOW KERB MARKINGS NO WAITING: AT ANY TIME & NO LOADING: MON - SAT, 8.30am - 6.30pm, NO LOADING: MON - SAT, MIDDAY - 6.30pm
	DOUBLE YELLOW LINE NO WAITING: AT ANY TIME
	DOUBLE YELLOW LINE + SINGLE YELLOW KERB MARKINGS NO WAITING: AT ANY TIME & NO LOADING: MON - FRI, 8.30am - 6.30pm & SAT 8.30am - 1.30pm
	DOUBLE YELLOW LINE + SINGLE YELLOW KERB MARKINGS NO WAITING: AT ANY TIME, NO LOADING: MON - SAT, 7.00am - 7.00pm
	DOUBLE YELLOW LINE + DOUBLE YELLOW KERB MARKINGS NO WAITING: AT ANY TIME & NO LOADING: AT ANY TIME
	EXISTING TYPE 1 / TYPE 2 CYCLE STAND
	PROPOSED TYPE 1 CYCLE STAND
	PROPOSED TYPE 2 CYCLE STAND

**CONWAY**  
great people. great work.

**WSP | PARSONS BRINCKERHOFF**  
25 Mandela Way, London, SE1 5SZ  
www.fmconway.co.uk www.wspgroup.com

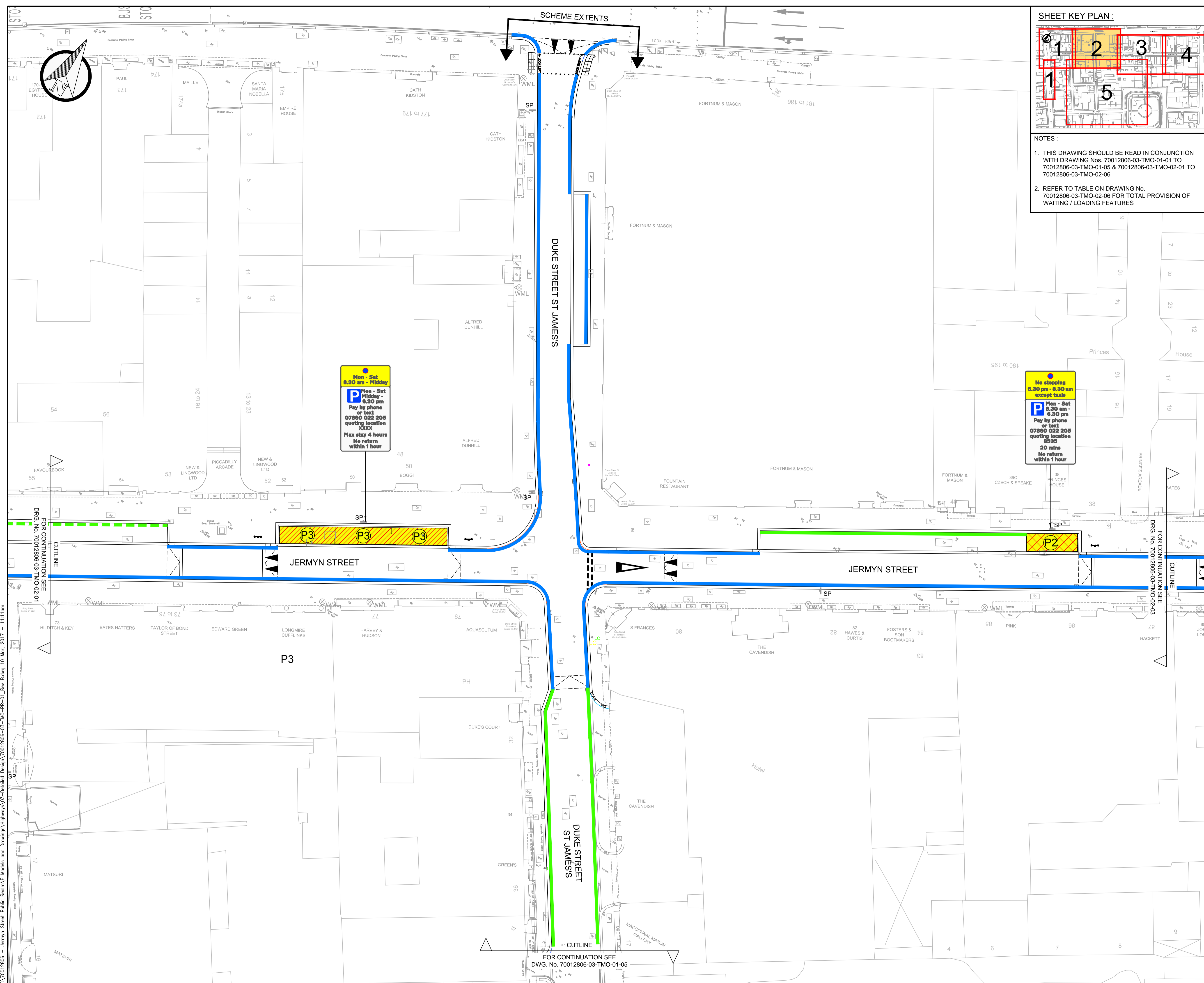
**City of Westminster**

**PROJECT**  
JERMYN STREET  
PUBLIC REALM IMPROVEMENTS

**TITLE**  
TMO CONSULTATION  
PROPOSED PARKING / LOADING RESTRICTIONS  
SHEET 1 OF 6

SCALE @ A1	DATE	DESIGN/DRAWN	CHECKED	APPROVED	SHT
1:200	13-07-2016	PO/PAD	AK	CDS	A1
JOB No.	WWESA1481	BREF/DSS No.	23005		
DRAWING No.	70012806-03-TMO-PR-01	REV.			C

T:\70012806 - Jermyrn Street Public Realm V.E Models and Drawings\Highways\03-Detailed Design\70012806-03-TMO-PR-01\_Rev\_B.dwg 10 Mar 2017 - 10:55am  
 This map is reproduced from Ordnance Survey material with the permission of Ordnance Survey on behalf of the Controller of Her Majesty's Stationery Office © Crown copyright. Unauthorised reproduction infringes Crown copyright and may lead to prosecution or civil proceedings. (WCC)(LA 10009597)



**SHEET KEY PLAN :**

**NOTES :**

- THIS DRAWING SHOULD BE READ IN CONJUNCTION WITH DRAWING Nos. 70012806-03-TMO-01-01 TO 70012806-03-TMO-01-05 & 70012806-03-TMO-02-01 TO 70012806-03-TMO-02-06
- REFER TO TABLE ON DRAWING No. 70012806-03-TMO-02-06 FOR TOTAL PROVISION OF WAITING / LOADING FEATURES

**KEY**

**WAITING / LOADING FEATURE TYPE AND RESTRICTION**

- P1** PAY TO PARK BAY TYPE 1 : MON - SAT, 8.30am - 6.30pm, MAX STAY 4 HOURS, NO RETURN WITHIN 1 HOUR
- P2** PAY TO PARK BAY TYPE 2 : MON - SAT 8.30am - 6.30pm, MAX STAY 20 MINS, NO RETURN WITHIN 1 HOUR 6.30pm - 8.30am NO STOPPING EXCEPT TAXIS
- P3** PAY TO PARK BAY TYPE 3 : MON - SAT, MIDDAY - 6.30pm, MAX STAY 4 HOURS, NO RETURN WITHIN 1 HR NO WAITING: MON-SAT, MIDNIGHT - MIDDAY DISABLED PARKING BAY AT ANY TIME, MAX STAY 4 HOURS ON MON - FRI, 8.30am - 6.30pm, NO RETURN WITHIN 1 HOUR
- D** RESIDENTS PARKING BAY (WESTMINSTER E) AT ANY TIME
- R** TAXI BAY AT ANY TIME NO STOPPING EXCEPT TAXIS
- T** DOCTORS PARKING BAY 8.00am - 8.00pm
- DR** LOADING BAY TYPE 1 AT ANY TIME, MAX STAY 20 MINS, NO RETURN WITHIN 1 HOUR
- L1** LOADING BAY TYPE 2 GOODS VEHICLES LOADING ONLY MON - SAT, 7.00am - 10.00pm MAX STAY 1 HOUR NO RETURN WITHIN 1 HR
- L2** LOADING BAY TYPE 3 MON - SAT, 8.30am - 6.30pm MAX STAY 1 HOUR, NO RETURN WITHIN 1 HOUR
- L3** SINGLE YELLOW LINE NO WAITING: MON - SAT, 8.30am - 6.30pm
- SINGLE YELLOW LINE + SINGLE YELLOW KERB MARKINGS NO WAITING: MON - SAT, 8.30am - 6.30pm, NO LOADING: MON - SAT, MIDDAY - 6.30pm
- DOUBLE YELLOW LINE NO WAITING: AT ANY TIME
- DOUBLE YELLOW LINE + SINGLE YELLOW KERB MARKINGS NO WAITING: AT ANY TIME & NO LOADING: MON - FRI, 8.30am - 6.30pm & SAT 8.30am - 1.30pm
- DOUBLE YELLOW LINE + SINGLE YELLOW KERB MARKINGS NO WAITING: AT ANY TIME, NO LOADING: MON - SAT, 7.00am - 7.00pm
- DOUBLE YELLOW LINE + DOUBLE YELLOW KERB MARKINGS NO WAITING: AT ANY TIME & NO LOADING: AT ANY TIME
- EXISTING TYPE 1 / TYPE 2 CYCLE STAND
- PROPOSED TYPE 1 CYCLE STAND
- PROPOSED TYPE 2 CYCLE STAND

REV	DATE	BY	DESCRIPTION	CHK	APP
C	09.03.2017	PKO	REVISED FOLLOWING CLIENT'S COMMENTS		
B	14.12.2016	PAD	REVISED FOLLOWING COMMENTS ARISING FROM TMO TEAM & RSA	AK	CDS
A	16.09.2016	PAD	INITIAL ISSUE	AK	CDS

**CONWAY**  
great people. great work.

**WSP | PARSONS BRINCKERHOFF**

25 Mandala Way, London, SE1 5SZ  
www.fmconway.co.uk www.wspgroup.com



**PROJECT**

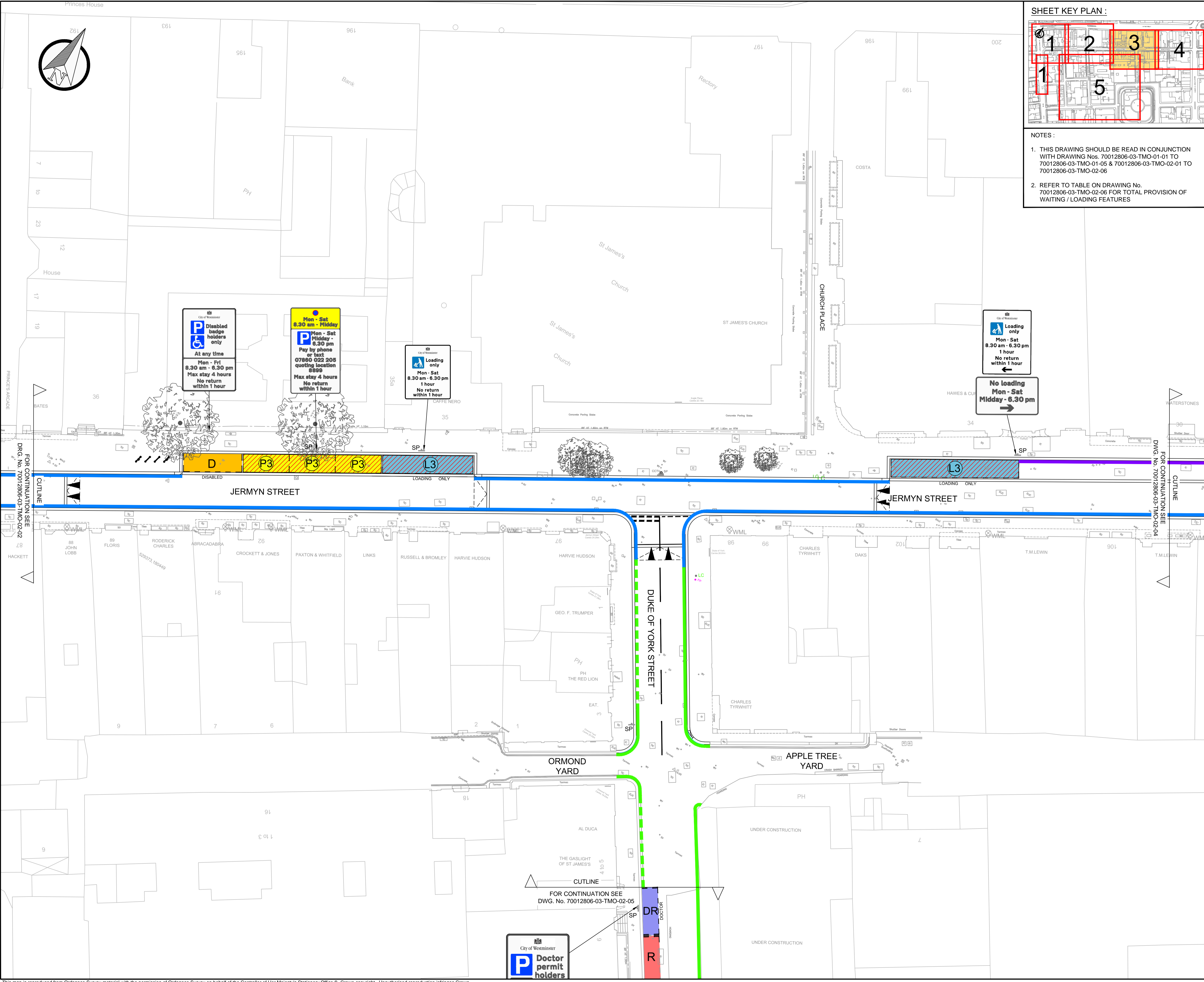
JERMYN STREET  
PUBLIC REALM IMPROVEMENTS

**TITLE**

TMO CONSULTATION  
PROPOSED PARKING / LOADING RESTRICTIONS  
SHEET 2 OF 6

SCALE @ A1	DATE	DESIGN/DRAWN	CHECKED	APPROVED	SHT
1:200	13-07-2016	PO/PAD	AK	CDS	A1
JOB No.	DRAWING No.		BREF/DSS No.		
WWESA1481	70012806-03-TMO-PR-02		23005		
DRAWING No.					REV.
70012806-03-TMO-PR-02					C

This map is reproduced from Ordnance Survey material with the permission of Ordnance Survey on behalf of the Controller of Her Majesty's Stationery Office © Crown copyright. Unauthorised reproduction infringes Crown copyright and may lead to prosecution or civil proceedings. (WCC)(LA 10009597)



**SHEET KEY PLAN :**

**NOTES :**

- THIS DRAWING SHOULD BE READ IN CONJUNCTION WITH DRAWING Nos. 70012806-03-TMO-01-01 TO 70012806-03-TMO-01-05 & 70012806-03-TMO-02-01 TO 70012806-03-TMO-02-06
- REFER TO TABLE ON DRAWING No. 70012806-03-TMO-02-06 FOR TOTAL PROVISION OF WAITING / LOADING FEATURES

**KEY**

**WAITING / LOADING FEATURE TYPE AND RESTRICTION**

- P1** PAY TO PARK BAY TYPE 1 : MON - SAT, 8.30am - 6.30pm, MAX STAY 4 HOURS, NO RETURN WITHIN 1 HOUR
- P2** PAY TO PARK BAY TYPE 2 : MON - SAT 8.30am - 6.30pm, MAX STAY 20 MINS, NO RETURN WITHIN 1 HOUR 6.30pm - 8.30am NO STOPPING EXCEPT TAXIS
- P3** PAY TO PARK BAY TYPE 3 : MON - SAT, MIDDAY - 6.30pm, MAX STAY 4 HOURS, NO RETURN WITHIN 1 HR NO WAITING: MON-SAT, MIDNIGHT - MIDDAY
- D** DISABLED PARKING BAY AT ANY TIME, MAX STAY 4 HOURS ON MON - FRI, 8.30am - 6.30pm, NO RETURN WITHIN 1 HOUR
- R** RESIDENTS PARKING BAY (WESTMINSTER E) AT ANY TIME
- T** TAXI BAY AT ANY TIME NO STOPPING EXCEPT TAXIS
- DR** DOCTORS PARKING BAY 8.00am - 8.00pm
- L1** LOADING BAY TYPE 1 AT ANY TIME, MAX STAY 20 MINS, NO RETURN WITHIN 1 HOUR
- L2** LOADING BAY TYPE 2 GOODS VEHICLES LOADING ONLY MON - SAT, 7.00am - 10.00pm MAX STAY 1 HOUR NO RETURN WITHIN 1 HR
- L3** LOADING BAY TYPE 3 MON - SAT, 8.30am - 6.30pm MAX STAY 1 HOUR, NO RETURN WITHIN 1 HOUR
- SINGLE YELLOW LINE NO WAITING: MON - SAT, 8.30am - 6.30pm
- SINGLE YELLOW LINE + SINGLE YELLOW KERB MARKINGS NO WAITING: MON - SAT, 8.30am - 6.30pm, NO LOADING: MON - SAT, MIDDAY - 6.30pm
- DOUBLE YELLOW LINE NO WAITING: AT ANY TIME
- DOUBLE YELLOW LINE + SINGLE YELLOW KERB MARKINGS NO WAITING: AT ANY TIME & NO LOADING: MON - FRI, 8.30am - 6.30pm & SAT 8.30am - 1.30pm
- DOUBLE YELLOW LINE + SINGLE YELLOW KERB MARKINGS NO WAITING: AT ANY TIME, NO LOADING: MON - SAT, 7.00am - 7.00pm
- DOUBLE YELLOW LINE + DOUBLE YELLOW KERB MARKINGS NO WAITING: AT ANY TIME & NO LOADING: AT ANY TIME
- EXISTING TYPE 1 / TYPE 2 CYCLE STAND
- PROPOSED TYPE 1 CYCLE STAND
- PROPOSED TYPE 2 CYCLE STAND

REV	DATE	BY	DESCRIPTION	CHK	APP
C	09.03.2017	PKO	REVISED FOLLOWING CLIENT'S COMMENTS		
B	14.12.2016	PAD	REVISED FOLLOWING COMMENTS ARISING FROM TMO TEAM & RSA	AK	CDS
A	16.09.2016	PAD	INITIAL ISSUE	AK	CDS

**DRAWING STATUS**

**DETAILED DESIGN**

25 Mandela Way, London, SE1 5SZ  
www.fmconway.co.uk www.wspgroup.com

**CITY OF WESTMINSTER**

**PROJECT**

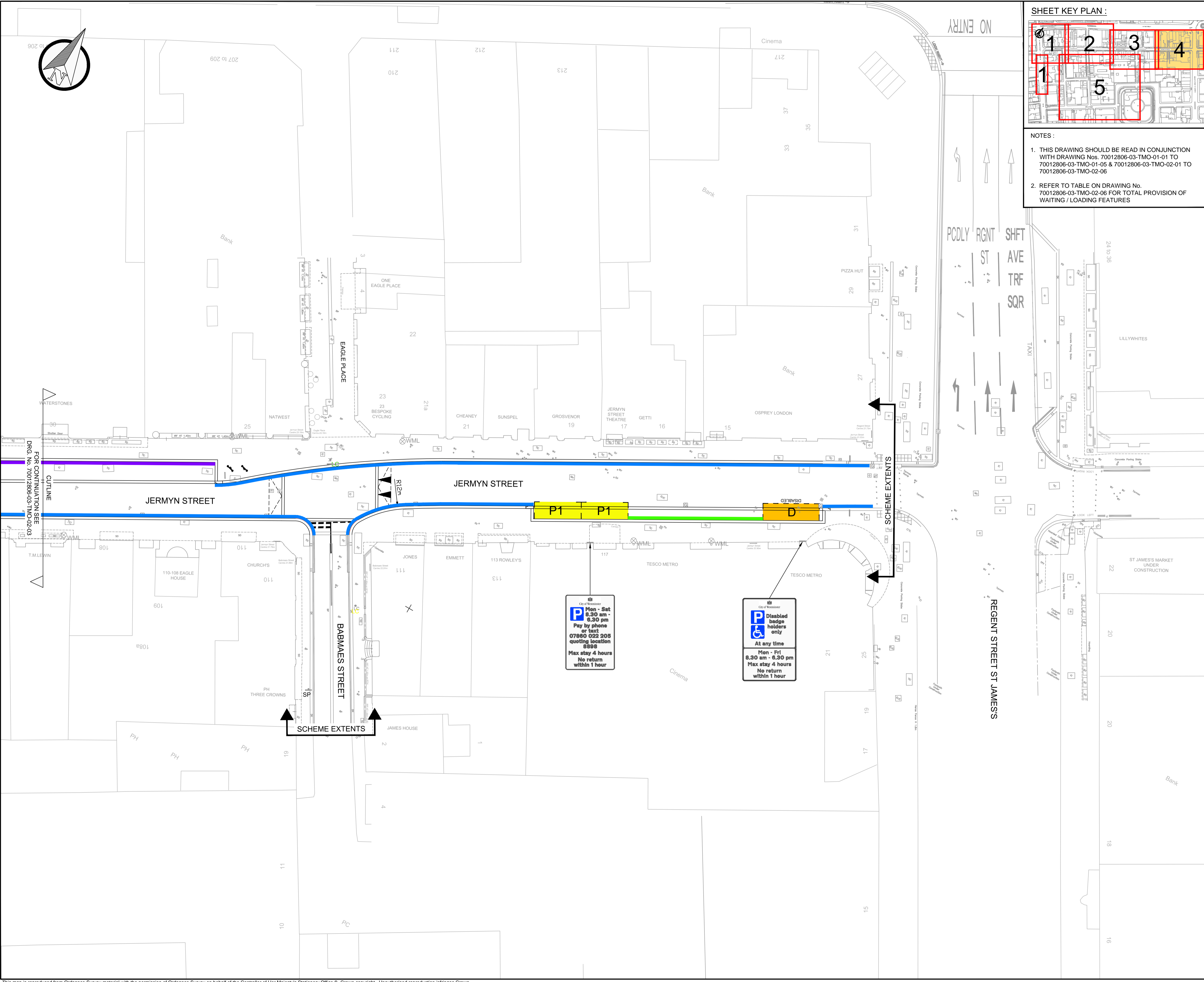
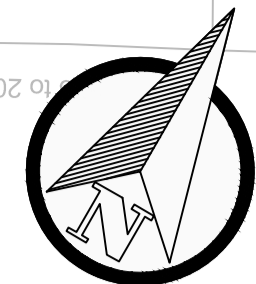
JERMYN STREET  
PUBLIC REALM IMPROVEMENTS

**TITLE**

TMO CONSULTATION  
PROPOSED PARKING / LOADING RESTRICTIONS  
SHEET 3 OF 6

SCALE @ A1	DATE	DESIGN/DRAWN	CHECKED	APPROVED	SHT
1:200	13-07-2016	PO/PAD	AK	CDS	A1
JOB No.	BRIEF/DSS No.				
WWESA1481	23005				
DRAWING No.	REV.				
70012806-03-TMO-PR-03	C				

T:\70012806 - Jermyn Street Public Realm E Models and Drawings\Highways\03-Detailed Design\70012806-03-TMO-PR-01\_Rev\_B.dwg 10 Mar 2017 - 11:11am  
 This map is reproduced from Ordnance Survey material with the permission of Ordnance Survey on behalf of the Controller of Her Majesty's Stationery Office © Crown copyright. Unauthorised reproduction infringes Crown copyright and may lead to prosecution or civil proceedings. (WCC)(LA 10009597)



**SHEET KEY PLAN :**

**NOTES :**

- THIS DRAWING SHOULD BE READ IN CONJUNCTION WITH DRAWING Nos. 70012806-03-TMO-01-01 TO 70012806-03-TMO-01-05 & 70012806-03-TMO-02-01 TO 70012806-03-TMO-02-06
- REFER TO TABLE ON DRAWING No. 70012806-03-TMO-02-06 FOR TOTAL PROVISION OF WAITING / LOADING FEATURES

**KEY**

WAITING / LOADING FEATURE TYPE AND RESTRICTION

<b>P1</b>	PAY TO PARK BAY TYPE 1 : MON - SAT, 8.30am - 6.30pm, MAX STAY 4 HOURS, NO RETURN WITHIN 1 HOUR
<b>P2</b>	PAY TO PARK BAY TYPE 2 : MON - SAT 8.30am - 6.30pm, MAX STAY 20 MINS, NO RETURN WITHIN 1 HOUR 6.30pm - 8.30am NO STOPPING EXCEPT TAXIS
<b>P3</b>	PAY TO PARK BAY TYPE 3 : MON - SAT, MIDDAY - 6.30pm, MAX STAY 4 HOURS, NO RETURN WITHIN 1 HR NO WAITING: MON-SAT, MIDNIGHT - MIDDAY
<b>D</b>	DISABLED PARKING BAY AT ANY TIME, MAX STAY 4 HOURS ON MON - FRI, 8.30am - 6.30pm, NO RETURN WITHIN 1 HOUR
<b>R</b>	RESIDENTS PARKING BAY (WESTMINSTER E) AT ANY TIME
<b>T</b>	TAXI BAY AT ANY TIME NO STOPPING EXCEPT TAXIS
<b>DR</b>	DOCTORS PARKING BAY 8.00am - 8.00pm
<b>L1</b>	LOADING BAY TYPE 1 AT ANY TIME, MAX STAY 20 MINS, NO RETURN WITHIN 1 HOUR
<b>L2</b>	LOADING BAY TYPE 2 GOODS VEHICLES LOADING ONLY MON - SAT, 7.00am - 10.00pm MAX STAY 1 HOUR NO RETURN WITHIN 1 HR
<b>L3</b>	LOADING BAY TYPE 3 MON - SAT, 8.30am - 6.30pm MAX STAY 1 HOUR, NO RETURN WITHIN 1 HOUR
	SINGLE YELLOW LINE NO WAITING: MON - SAT, 8.30am - 6.30pm
	SINGLE YELLOW LINE + SINGLE YELLOW KERB MARKINGS NO WAITING : MON - SAT, 8.30am - 6.30pm, NO LOADING : MON - SAT, MIDDAY - 6.30pm
	DOUBLE YELLOW LINE NO WAITING : AT ANY TIME
	DOUBLE YELLOW LINE + SINGLE YELLOW KERB MARKINGS NO WAITING : AT ANY TIME & NO LOADING : MON - FRI, 8.30am - 6.30pm & SAT 8.30am - 1.30pm
	DOUBLE YELLOW LINE + SINGLE YELLOW KERB MARKINGS NO WAITING : AT ANY TIME, NO LOADING : MON - SAT, 7.00am - 7.00pm
	DOUBLE YELLOW LINE + DOUBLE YELLOW KERB MARKINGS NO WAITING : AT ANY TIME & NO LOADING : AT ANY TIME
	EXISTING TYPE 1 / TYPE 2 CYCLE STAND
	PROPOSED TYPE 1 CYCLE STAND
	PROPOSED TYPE 2 CYCLE STAND

REV	DATE	BY	DESCRIPTION	CHK	APP
C	09.03.2017	PKO	REVISED FOLLOWING CLIENT'S COMMENTS		
B	14.12.2016	PAD	REVISED FOLLOWING COMMENTS ARISING FROM TMO TEAM & RSA	AK	CDS
A	16.09.2016	PAD	INITIAL ISSUE	AK	CDS

**DRAWING STATUS**

**DETAILED DESIGN**

25 Mandela Way, London, SE1 5SZ  
www.fmconway.co.uk www.wspgroup.com

**CITY OF WESTMINSTER**

**PROJECT**

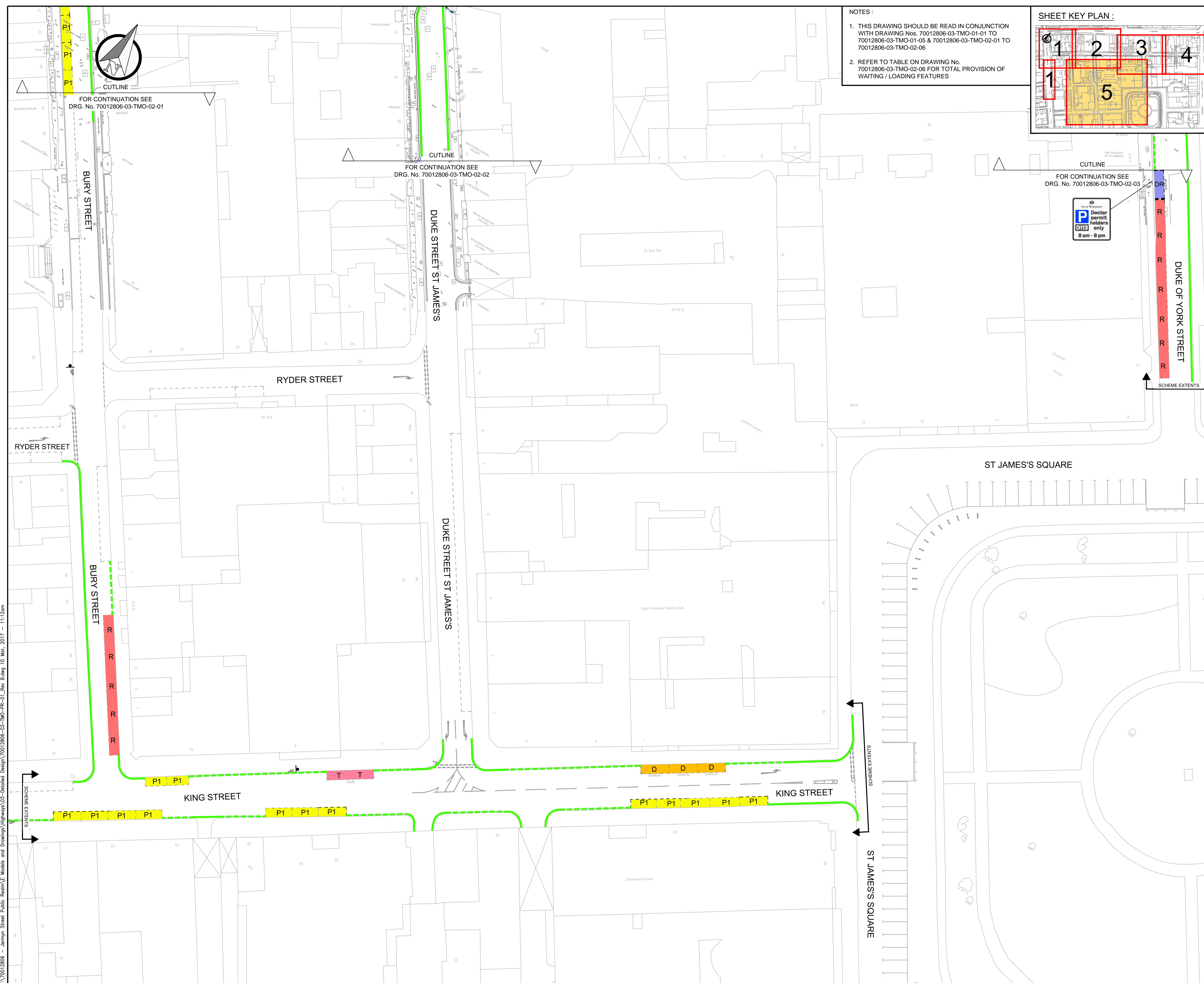
JERMYN STREET  
PUBLIC REALM IMPROVEMENTS

**TITLE**

TMO CONSULTATION  
PROPOSED PARKING / LOADING RESTRICTIONS  
SHEET 4 OF 6

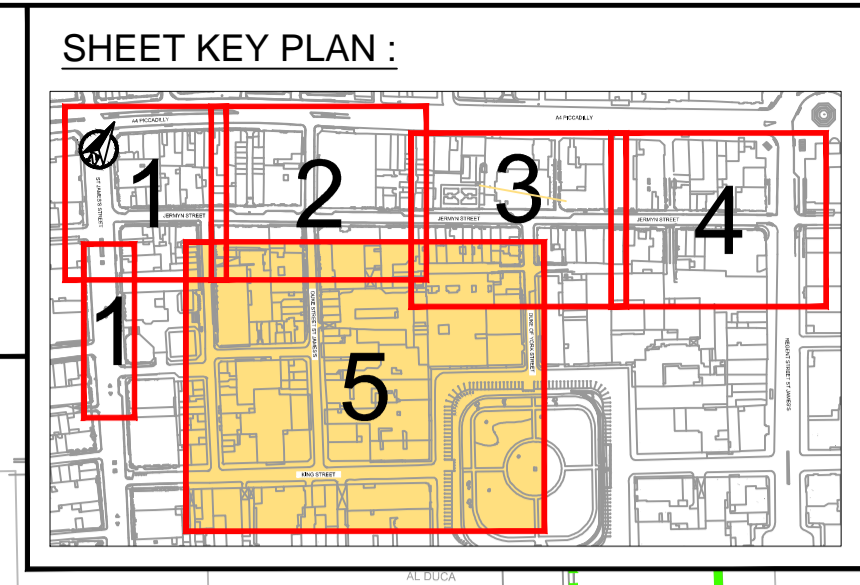
SCALE @ A1	DATE	DESIGN/DRAWN	CHECKED	APPROVED	SHT
1:200	13-07-2016	PO/PAD	AK	CDS	A1
JOB No.	BRIEF/DSS No.		REV.		
WWESA1481	23005		C		
DRAWING No.	70012806-03-TMO-PR-04				

T:\70012806 - Jermyn Street Public Realm Models and Drawings\Highways\03-Detailed Design\70012806-03-TMO-PR-01\_Rev\_B.dwg 10 Mar 2017 - 11:11am



NOTES :

- THIS DRAWING SHOULD BE READ IN CONJUNCTION WITH DRAWING Nos. 70012806-03-TMO-01-01 TO 70012806-03-TMO-01-05 & 70012806-03-TMO-02-01 TO 70012806-03-TMO-02-06
- REFER TO TABLE ON DRAWING No. 70012806-03-TMO-02-06 FOR TOTAL PROVISION OF WAITING / LOADING FEATURES



KEY

WAITING / LOADING FEATURE TYPE AND RESTRICTION

<b>P1</b>	PAY TO PARK BAY TYPE 1 : MON - SAT, 8.30am - 6.30pm, MAX STAY 4 HOURS, NO RETURN WITHIN 1 HOUR
<b>P2</b>	PAY TO PARK BAY TYPE 2 : MON - SAT 8.30am - 6.30pm, MAX STAY 20 MINS, NO RETURN WITHIN 1 HOUR 6.30pm - 8.30am NO STOPPING EXCEPT TAXIS
<b>P3</b>	PAY TO PARK BAY TYPE 3 : MON - SAT, MIDDAY - 6.30pm, MAX STAY 4 HOURS, NO RETURN WITHIN 1 HR NO WAITING: MON-SAT, MIDNIGHT - MIDDAY
<b>D</b>	DISABLED PARKING BAY AT ANY TIME, MAX STAY 4 HOURS ON MON - FRI, 8.30am - 6.30pm, NO RETURN WITHIN 1 HOUR
<b>R</b>	RESIDENTS PARKING BAY (WESTMINSTER E) AT ANY TIME
<b>T</b>	TAXI BAY AT ANY TIME NO STOPPING EXCEPT TAXIS
<b>DR</b>	DOCTORS PARKING BAY 8.00am - 8.00pm
<b>L1</b>	LOADING BAY TYPE 1 AT ANY TIME, MAX STAY 20 MINS, NO RETURN WITHIN 1 HOUR
<b>L2</b>	LOADING BAY TYPE 2 GOODS VEHICLES LOADING ONLY MON - SAT, 7.00am - 10.00pm MAX STAY 1 HOUR NO RETURN WITHIN 1 HR
<b>L3</b>	LOADING BAY TYPE 3 MON - SAT, 8.30am - 6.30pm MAX STAY 1 HOUR, NO RETURN WITHIN 1 HOUR
	SINGLE YELLOW LINE NO WAITING: MON - SAT, 8.30am - 6.30pm
	SINGLE YELLOW LINE + SINGLE YELLOW KERB MARKINGS NO WAITING : MON - SAT, 8.30am - 6.30pm, NO LOADING : MON - SAT, MIDDAY - 6.30pm
	DOUBLE YELLOW LINE NO WAITING : AT ANY TIME
	DOUBLE YELLOW LINE + SINGLE YELLOW KERB MARKINGS NO WAITING : AT ANY TIME & NO LOADING : MON - FRI, 8.30am - 6.30pm & SAT 8.30am - 1.30pm
	DOUBLE YELLOW LINE + SINGLE YELLOW KERB MARKINGS NO WAITING : AT ANY TIME, NO LOADING : MON - SAT, 7.00am - 7.00pm
	DOUBLE YELLOW LINE + DOUBLE YELLOW KERB MARKINGS NO WAITING : AT ANY TIME & NO LOADING : AT ANY TIME
	EXISTING TYPE 1 / TYPE 2 CYCLE STAND
	PROPOSED TYPE 1 CYCLE STAND
	PROPOSED TYPE 2 CYCLE STAND

REV	DATE	BY	DESCRIPTION	CHK	APP
C	09.03.2017	PKO	REVISED FOLLOWING CLIENT'S COMMENTS		
B	14.12.2016	PAD	REVISED FOLLOWING COMMENTS ARISING FROM TMO TEAM & RSA	AK	CDS
A	16.09.2016	PAD	INITIAL ISSUE	AK	CDS

CLIENT

**CONWAY**  
great people : great work

**WSP | PARSONS BRINCKERHOFF**

25 Mandela Way, London, SE1 5SZ  
www.fmconway.co.uk www.wspgroup.com

PROJECT

**City of Westminster**

JERMYN STREET  
PUBLIC REALM IMPROVEMENTS

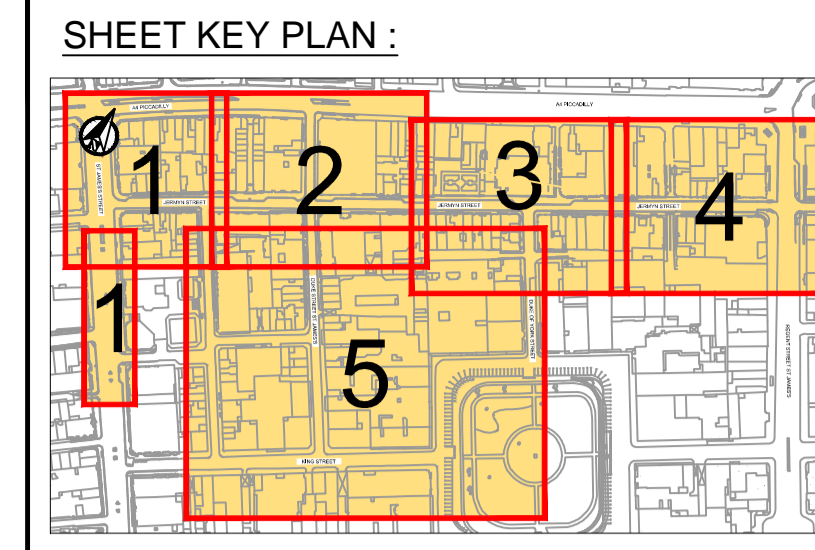
TITLE

TMO CONSULTATION  
PROPOSED PARKING / LOADING RESTRICTIONS  
SHEET 5 OF 6

SCALE @ A1	DATE	DESIGNED/DRAWN	CHECKED	APPROVED	SHT
1:333	13-07-2016	PO/PAD	AK	CDS	A1
JOB No.	WWESA1481	BRIEF/DSS No.	23005		
DRAWING No.	70012806-03-TMO-PR-05	REV.			C

T:\70012806 - Jermyn Street Public Realm VE Models and Drawings\Highways\03-Detailed Design\70012806-03-TMO-PR-01\_Rev\_B.dwg 10 Mar 2017 - 11:12am  
 This map is reproduced from Ordnance Survey material with the permission of Ordnance Survey on behalf of the Controller of Her Majesty's Stationery Office © Crown copyright. Unauthorised reproduction infringes Crown copyright and may lead to prosecution or civil proceedings. (WCC)(LA 10009597)

JERMYN STREET, St. JAMES'S STREET, DUKE STREET St. JAMES'S, DUKE OF YORK STREET & KING STREET  
TMO WORKS - SCHEME WIDE GAINS AND LOSSES TABLE



NOTES :

- THIS DRAWING SHOULD BE READ IN CONJUNCTION WITH DRAWING Nos. 70012806-03-TMO-01-01 TO 70012806-03-TMO-01-05 (EXISTING WAITING & LOADING PROVISIONS) & DRAWING Nos. 70012806-03-TMO-02-01 TO 70012806-03-TMO-02-05 (PROPOSED WAITING AND LOADING PROVISIONS)

RESTRICTION / PROVISION TYPE	SCHEME-WIDE OVERALL GAINS / LOSSES		
	Existing	Proposed	Difference
<u>PAY TO PARK BAYS</u> PAY BY PHONE BAY TYPE 1: MON - SAT, 8.30am - 6.30pm MAX STAY 4 HOURS, NO RETURN WITHIN 1 HOUR	168.1m (32 BAYS)	137.3m (26 BAYS)	-30.9m (-6 BAYS)
<u>PAY TO PARK BAYS</u> PAY BY PHONE BAY TYPE 2: MON - SAT, 8.30am - 6.30pm MAX STAY 20 MINS, NO RETURN WITHIN 1 HOUR  6.30pm - 8.30am NO STOPPING EXCEPT TAXIS	5.8m (1 BAY)	6.1m (1 BAY)	0.2m (NO CHANGE)
<u>PAY TO PARK BAYS</u> PAY BY PHONE BAY TYPE 3: MON - SAT, MIDDAY - 6.30pm MAX STAY 4 HOURS, NO RETURN WITHIN 1 HOUR	0.0m	35.9m (6 BAYS)	35.9m (6 BAYS)
<u>DISABLED PARKING BAYS</u> AT ANY TIME MAX STAY 4 HOURS ON MON - FRI, 8.30am - 6.30pm, NO RETURN WITHIN 1 HOUR	40.7m (7 BAYS)	40.7m (7 BAYS)	0.0m (NO CHANGE)
<u>RESIDENTS PARKING BAYS (WESTMINSTER E)</u> AT ANY TIME	85.4m (16 SPACES)	79.6m (15 SPACES)	-5.8m (-1 SPACE)
<u>TAXI BAYS</u> AT ANY TIME, NO STOPPING EXCEPT TAXIS	44.0m (8 BAYS)	44.0m (8 BAYS)	0.0m (NO CHANGE)
<u>DOCTOR'S PARKING BAYS</u> 8.00am - 8.00pm	5.8m (1 BAY)	5.8m (1 BAY)	0.0m (NO CHANGE)
<u>LOADING BAY TYPE 1</u> MAX STAY 20 MINS, NO RETURN WITHIN 1 HOUR	14.9m	14.9m	0.0m
<u>LOADING BAY TYPE 2</u> GOODS VEHICLES LOADING ONLY. MON - SAT, 7.00am - 10.00pm MAX STAY 1 HOUR, NO RETURN WITHIN 1 HOUR	14.0m	0.0m	-14.0m
<u>LOADING BAY TYPE 3</u> MON - SAT, 8.30am - 6.30pm MAX STAY 1 HOUR, NO RETURN WITHIN 1 HOUR	0.0m	25.8m	25.8m
<u>SINGLE YELLOW LINE</u> NO WAITING: MON - SAT, 8.30am - 6.30pm	315.9m	264.9m	-51.0m
<u>SINGLE YELLOW LINE WITH SINGLE YELLOW KERB MARKINGS</u> NO WAITING: MON - SAT, 8.30am - 6.30pm NO LOADING: MON - SAT, MIDDAY - 6.30pm	0.0m	38.0m	38.0m
<u>DOUBLE YELLOW LINE</u> NO WAITING: AT ANY TIME	510.0m	398.9m	-111.1m
<u>DOUBLE YELLOW LINE WITH SINGLE YELLOW KERB MARKING</u> NO WAITING: AT ANY TIME NO LOADING: MON - FRI, 8.30am - 6.30pm, & SAT 8.30am - 1.30pm	44.5m	7.5m	-36.9m
<u>DOUBLE YELLOW LINE WITH SINGLE YELLOW KERB MARKING</u> NO WAITING: AT ANY TIME NO LOADING: MON - SAT, 7.00am - 7.00pm	55.6m	55.6m	0.0m
<u>DOUBLE YELLOW LINE WITH DOUBLE YELLOW KERB MARKING</u> NO WAITING: AT ANY TIME NO LOADING: AT ANY TIME	622.8m	798.7m	175.8m
<u>CYCLE STANDS</u>	16 No.	17 No.	1 No.

REV	DATE	BY	DESCRIPTION	CHK	APP
C	09.03.2017	PKO	REVISED FOLLOWING CLIENT'S COMMENTS		
B	14.12.2016	PAD	REVISED FOLLOWING COMMENTS ARISING FROM TMO TEAM & RSA	AK	CDS
A	16.09.2016	PAD	INITIAL ISSUE	AK	CDS

DRAWING STATUS

**DETAILED DESIGN**



CLIENT

**City of Westminster**

PROJECT

JERMYN STREET  
PUBLIC REALM IMPROVEMENTS

TITLE

TMO CONSULTATION  
TMO WORKS SCHEME WIDE GAINS / LOSSES  
SHEET 6 OF 6

SCALE @ A1	DATE	DESIGN/DRAWN	CHECKED	APPROVED	SHT
1:333	13-07-2016	PO/PAD	AK	CDS	A1
JOB No.	WWESA1481		BRIEF/DSS No.	23005	
DRAWING No.	70012806-03-TMO-PR-06			REV.	C

F:\70012806 - Jermyrn Street Public Realm\E Models and Drawings\Highways\03-Detailed Design\70012806-03-TMO-PR-01\_Rev. B.dwg 10 Mar 2017 - 11:13am